

Monitoring and Evaluation in Climate Action

How is M&E useful in the program cycle?

Video 3



Monitoring and Evaluation in Climate Action



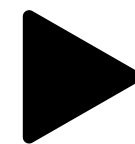
Why is evaluation important for climate?

What is monitoring and evaluation (M&E)?

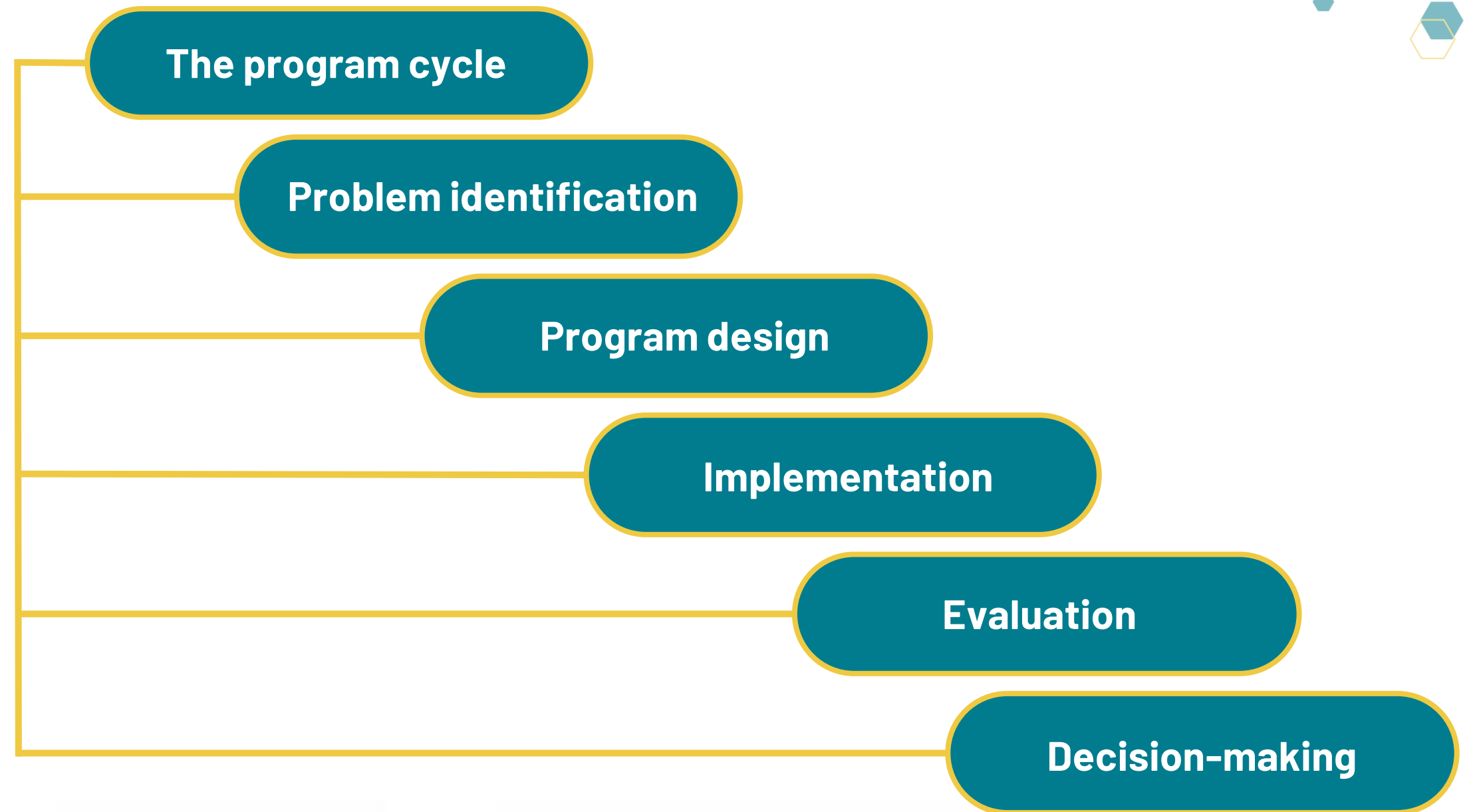
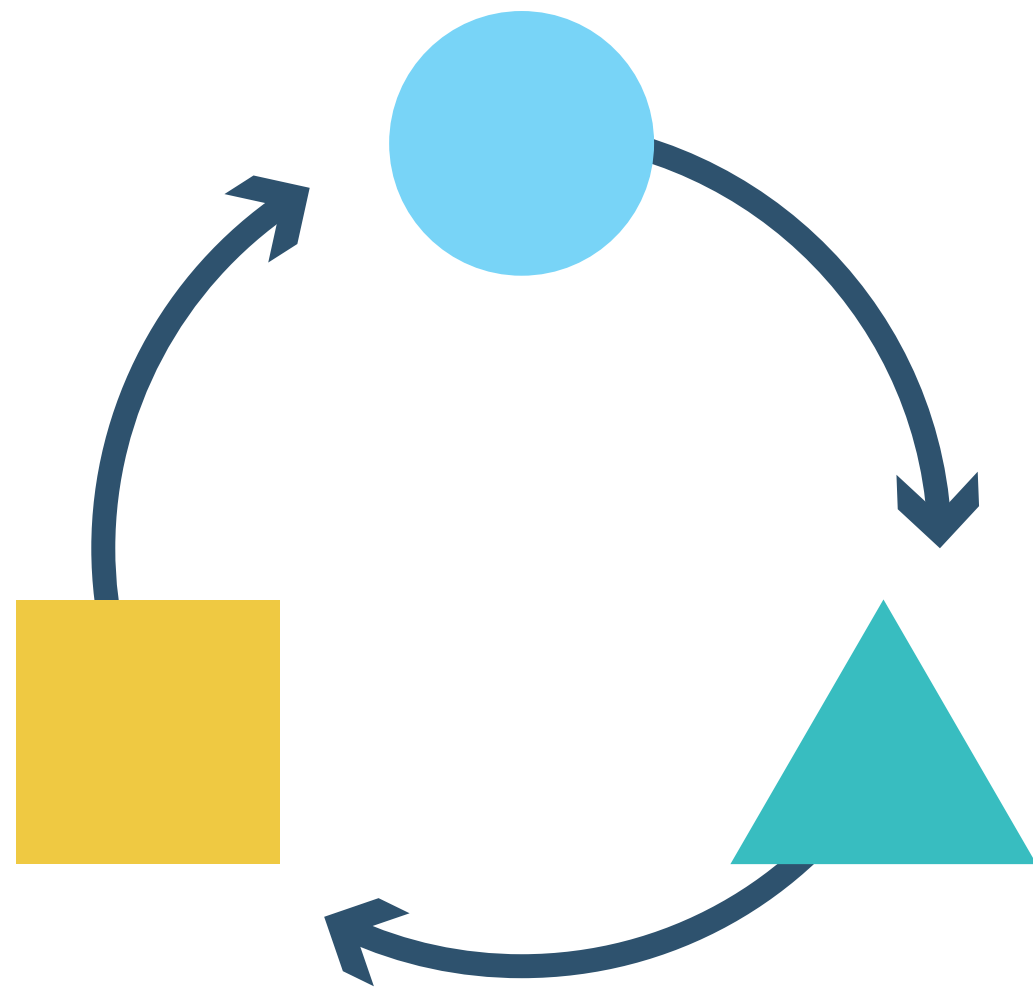
How is M&E useful in the program cycle?

VIDEO 3

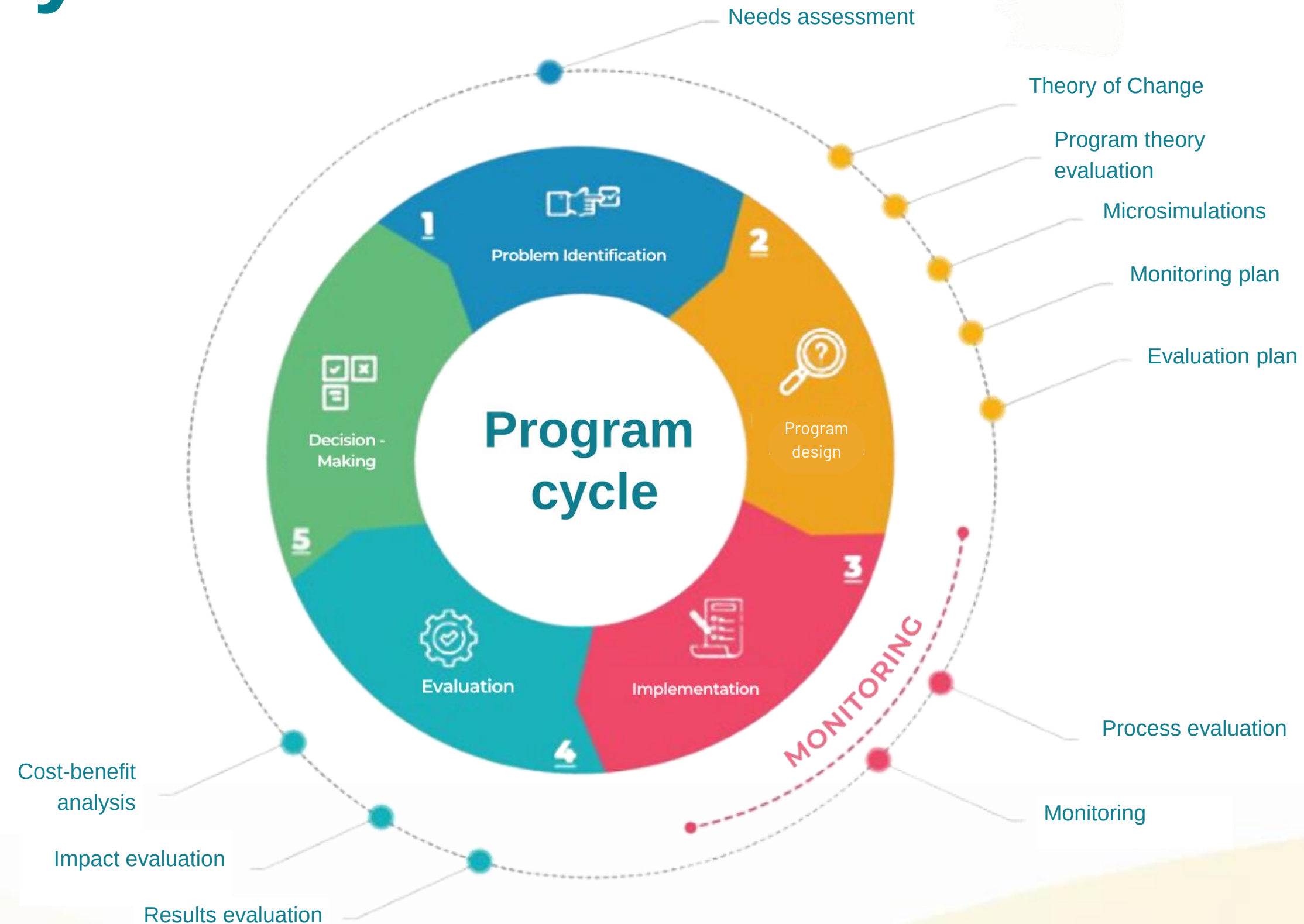
How to develop a program Theory of Change?



How is M&E useful in the program cycle?



Program cycle and M&E tools



Source: Secchi (2014); Kraft & Furlong (2019).



Example: energy efficiency project



CLEAN TECHNOLOGY FUND (CTF) CLEAN TECHNOLOGY RENEWABLE ENERGY INTEGRATION

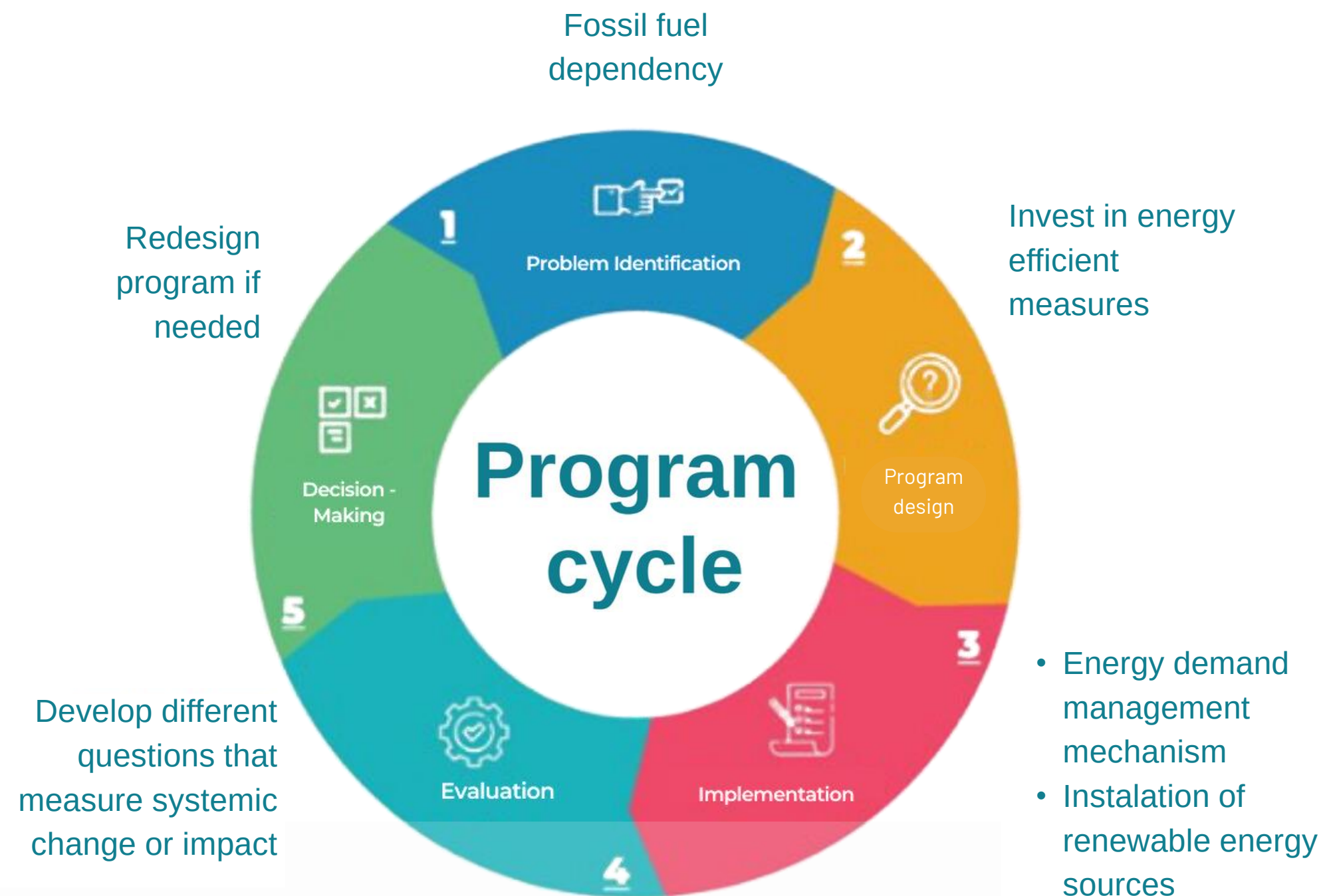
PROJECT ID: XCTFC0005A

**ENERGY EFFICIENCY PROGRAM IN THE SAN ANDRÉS,
PROVIDENCIA AND SANTA CATALINA ARCHIPELAGO**

Source: CIF (2023)

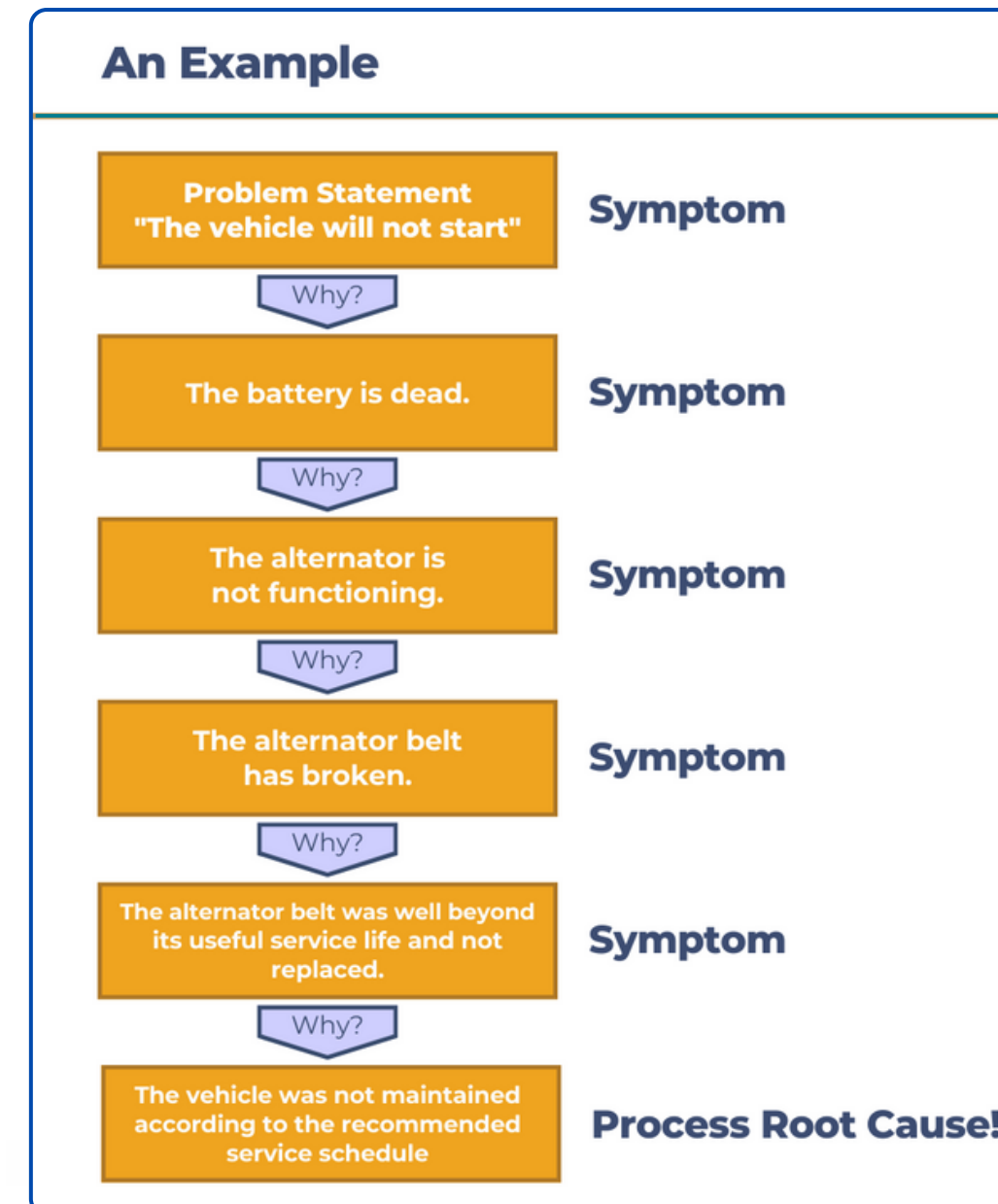


Program cycle

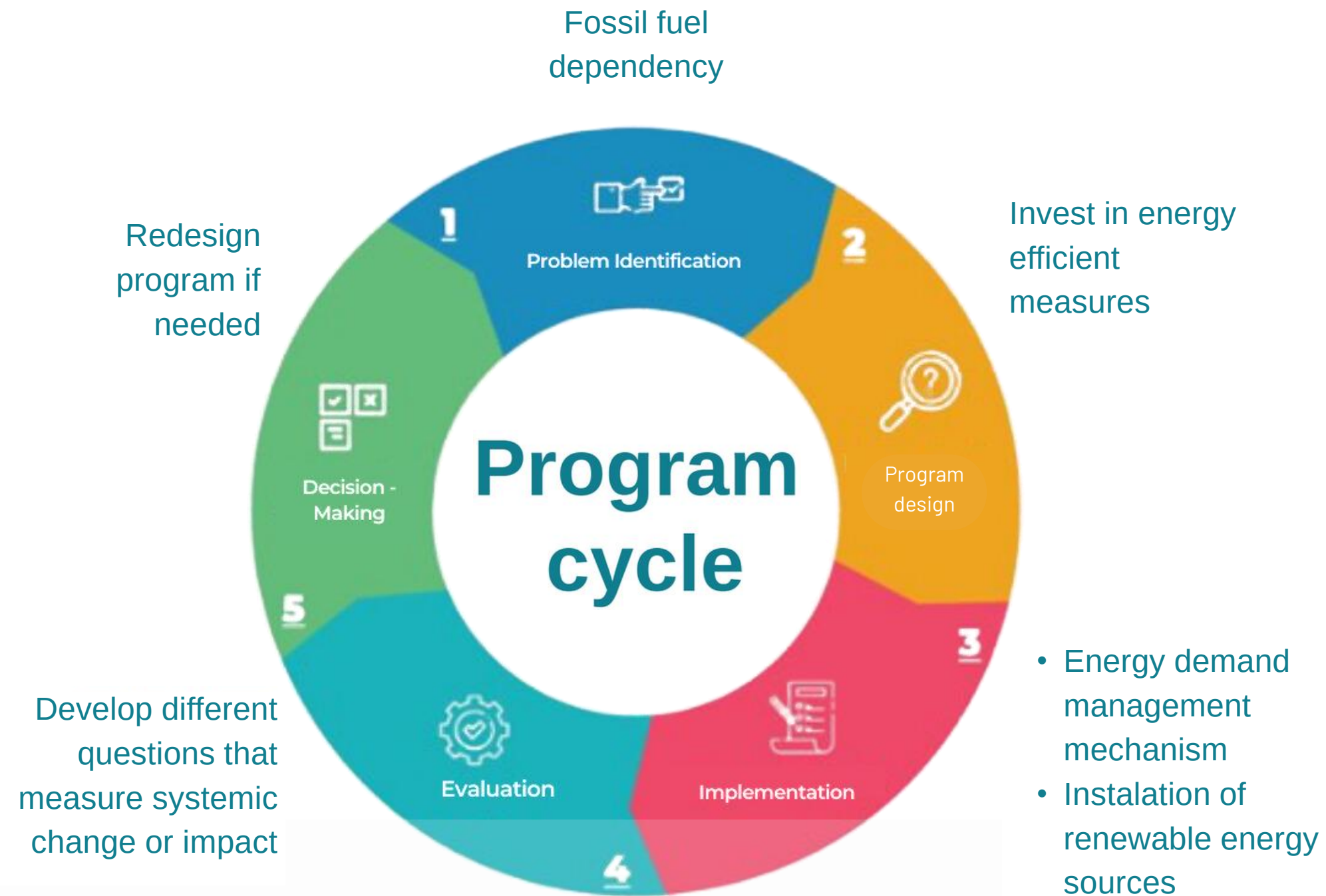


Phase 1: Problem Identification

- State the problem
 - How do we know there's a problem?
 - Ask why!
- Why is problem definition important?
- Why is root cause analysis important?



Program cycle



Phase 2: Program design



Program Theory Development

- The program theory explains how and why a program is expected to work.
- It seeks to demonstrate the connections between the activities and the outcomes.
- This logic should be evidence-based.
- Helpful to articulate as a Theory of Change (video 4)

IF the activity is provided, **THEN** what should be the result for participants?

WHY do you believe the activity will lead to this result?

What evidence do you have that this activity will lead to this result (data from your own or other programs, published literature, etc.)?

Source: Wilder (2009)

Phase 3: Implementation



- Is program implementation occurring as planned?
- Are the goals being met?
- What are the challenges in implementing the program as designed?

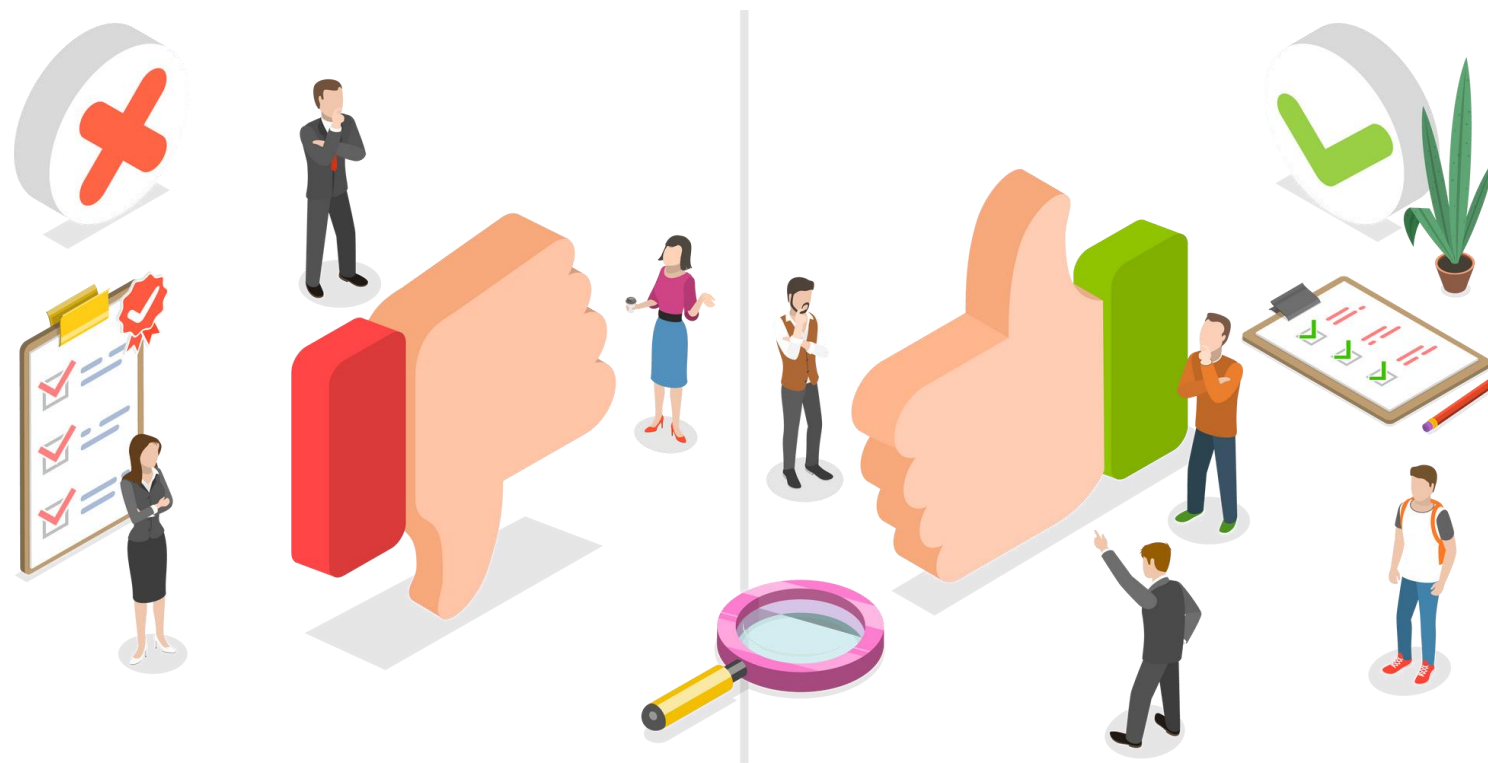
Phase 4: Evaluation



- Has the program achieved its desired results?
- What are the impacts of the program? Are there unintended consequences?
- How much was invested to achieve these impacts?
- How do the costs compare to the benefits?



Phase 5: Decision-making



- Using evidence for informed choices
 - Relevance and Speed of change
- Program expansion, redesign, or cancellation
 - Adaptive sustainability
- Replication in similar contexts and territories
 - Scalability



References

BetterEvaluation. (2016). Specify the Key Evaluation Questions (KEQs). https://www.betterevaluation.org/en/rainbow_framework/frame/specify_key_evaluation_questions

CIF. (n.d.). Transformational Change Guidance Questions. https://www.cif.org/sites/cif_enc/files/knowledge-documents/tclp_webinar_guidance_questions_0.pdf

CIF. (2021, September). CIF's Transformational Change Concepts – Transformational Change Learning Brief.

CIF (2023). Energy Efficiency Program in the San Andrés, Providencia and Santa Catalina Archipelago. Project Snapshot. Source: <https://www.cif.org/projects/energy-efficiency-program-san-andrs-providencia-and-santa-catalina-archipelago>

GEF/IPDET. (2022, July). Developing a Theory of Change with a Systems Lens. Powerpoint presentation.

KRAFT, Michael E.; FURLONG, Scott R. Public policy: Politics, analysis, and alternatives. Cq Press, 2019.

OECD/DAC Network on Development Evaluation (2019). Better Criteria for Better Evaluation: Revised Evaluation Criteria Definitions and Principles for Use. Available at: <https://www.oecd.org/dac/evaluation/revised-evaluation-criteria-dec-2019.pdf>

OECD (2023), Glossary of Key Terms in Evaluation and Results-based Management for Sustainable Development (Second Edition), OECD Publishing, Paris, <https://doi.org/10.1787/632da462-en-fr-es>.

SECCHI, Leonardo. Políticas Públicas: conceitos, esquemas de análise, casos práticos, 2ª ED. São Paulo: Cengage Learning, 2014.

WILDER (2009). Program theory and logic models Evaluation resources from Wilder Research. <https://www.evaluatod.org/assets/resources/evaluation-guides/logicmodel-8-09.pdf>

