

# Leaving no one behind in the delivery of UNFPA mission:

*Why is feminist evaluation needed?*

Karen Cadondon

Evaluation Specialist

UNFPA Independent Evaluation Office





# UNFPA

---

- United Nations Population Fund (UNFPA) is the United Nations sexual and reproductive health agency.
- UNFPA works in more than 150 countries, partnering with governments, CSOs, and other stakeholders to advance sexual and reproductive health and rights.
- UNFPA works to deliver a world where every pregnancy is wanted, every childbirth is safe, and every young person's potential is fulfilled.



# Evaluation at UNFPA

---

- Evaluation at UNFPA plays a crucial role in assessing the effectiveness of programs and interventions, ensuring accountability and promoting learning and improvement.
- UNFPA's evaluation approach is guided by principles of equity, human rights, gender equality, and sustainability.
- Through evaluation, UNFPA strives to reach the furthest behind and empower communities, contributing to sustainable development and transformative social change.

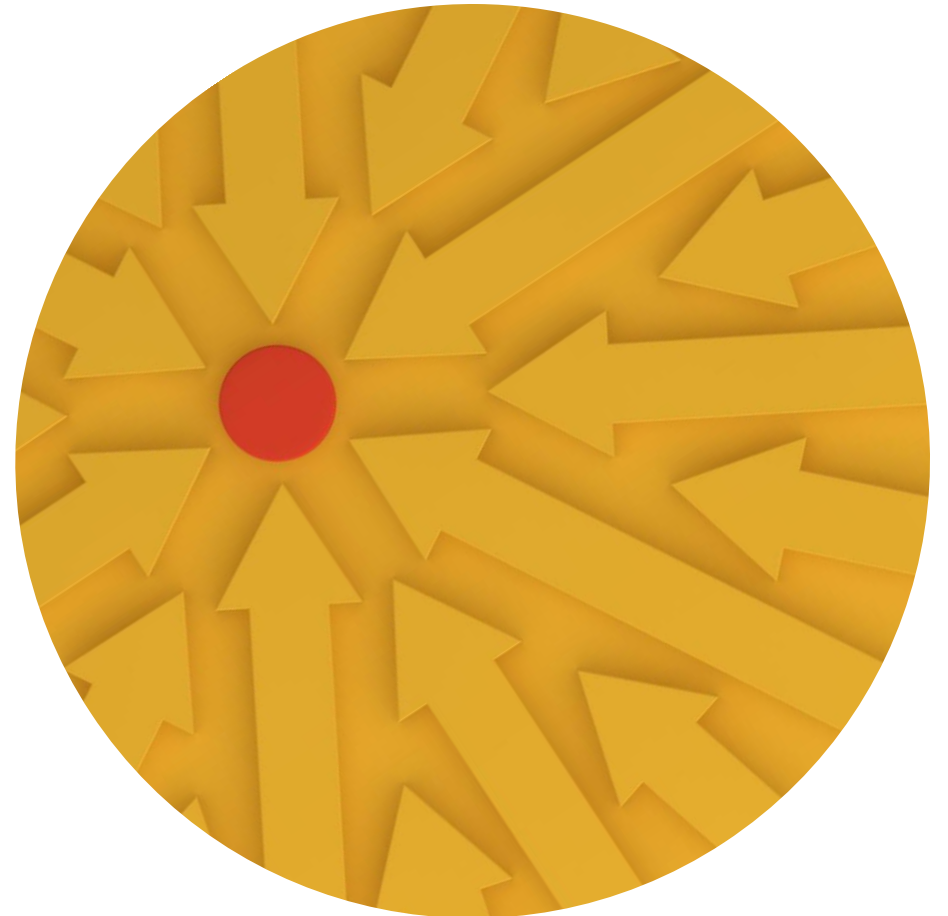
# Why is important for UNFPA to address those who are being left behind?

- UNFPA recognizes those who experience multiple forms of discrimination are also those furthest away from achieving its 3 transformative results.
- By addressing the root causes of exclusion, UNFPA can build more equitable, inclusive societies where everyone has equal opportunities and access to services and ensure that everyone's rights are respected and upheld.
- LNOB is central to the mission of the UNFPA to promote the health and rights of all individuals, especially those who are most marginalized and vulnerable, contributing to more inclusive and sustainable development outcomes.
- **Assessing UNFPA's efforts to integrate LNOB is essential, yet challenging due to the complexities of exclusion; it requires a fundamental shift in how we conceptualize and conduct evaluations.**

# Why is feminist evaluation the best approach to address this evaluation need?

---

- Traditional evaluation approaches often fall short in capturing the varied and layered experiences and perspectives of marginalized groups, in particular, women and young people.
- By adopting a feminist approach, UNFPA evaluations can more effectively identify and address the needs of the most marginalized, and ultimately lead to evaluations that are more relevant and impactful.



# Why is feminist evaluation the best approach to address this evaluation need?

---

- **Power Dynamics:** Examines power dynamics in evaluation processes, seeks to redistribute power to marginalized groups, and ensures evaluation findings are used to advocate for the rights of the furthest behind.
- **Intersectionality:** Recognizes the intersectional identities and multiple factors of exclusion that can shape an individual's experiences of being left behind.
- **Participatory and Inclusive:** Prioritizes the participation and empowerment of those left behind, emphasizing the importance of diverse voices in the evaluation process.
- **Context and Complexity:** Allows deeper understanding of change in the social, cultural, and political contexts in which evaluations take place.
- **Transformative Change:** Aims not only to assess the effectiveness of programs but can also help drive transformative change that benefits all individuals and communities.

# Practical application: Evaluation of UNFPA support to integration of LNOB

## Purpose of the evaluation

- Provide evaluative evidence and learning to enhance UNFPA support to implement the principle of LNOB
- Includes advancing meaningful engagement and advocacy of LNOB rightsholders.

## Objectives of the evaluation

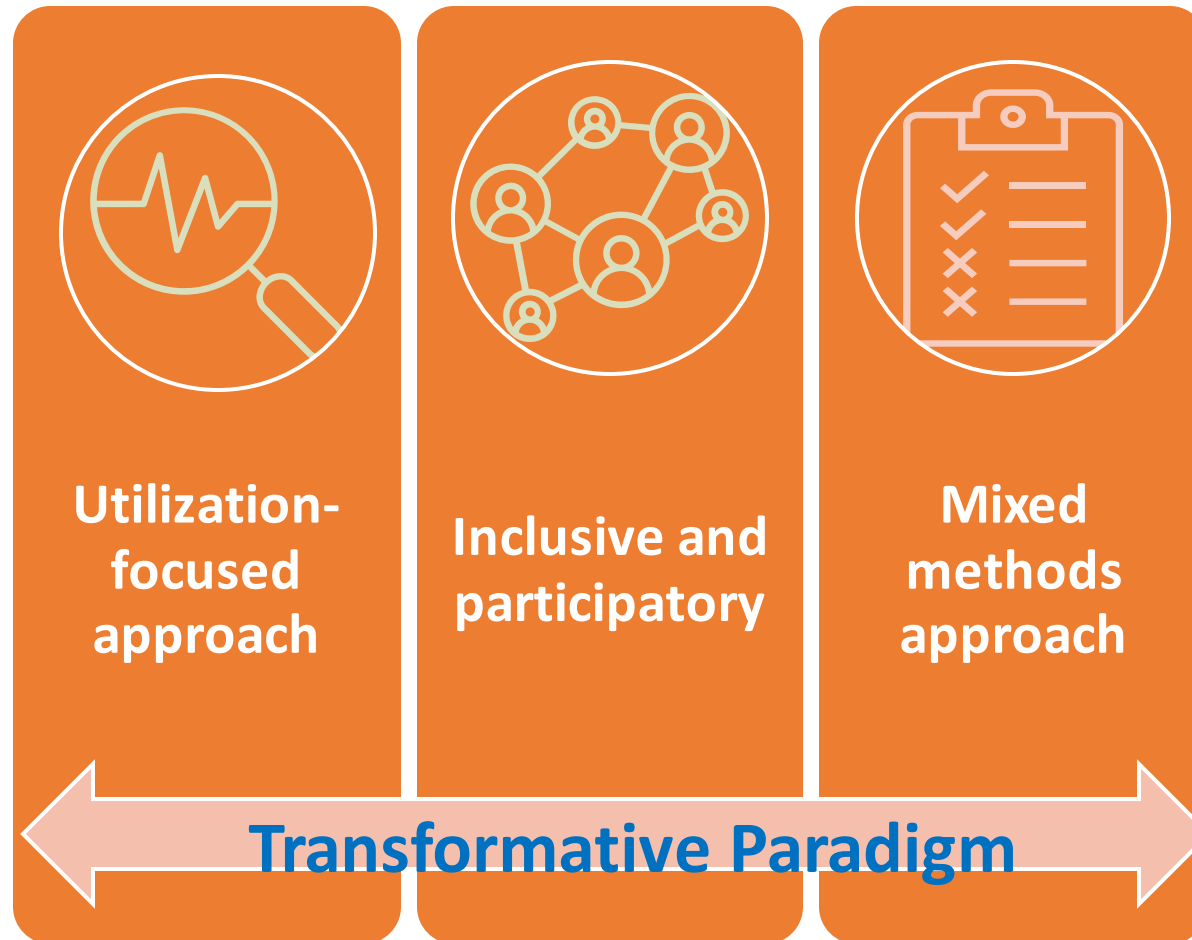
- Assess UNFPA conceptualization, integration, and implementation of the principle of LNOB;
- Facilitate learning and capture good practices from UNFPA experience on what is working and not working;
- Integrate practical and innovative ways to engage LNOB rightsholders throughout the evaluation.

## Scope of the evaluation

- Cover all areas of its work at the global, regional and country level from 2018 to 2024

# Practical application: LNOB Evaluation

## Feminist research framework



- Feminist evaluation requires fundamentally reshaping the way we conceptualize and conduct evaluations.
- The underlying beliefs, values, and assumptions of an evaluation help to guide how it is conceptualized, conducted, and interpreted.
- Underpinning this evaluation is Mertens' **transformative paradigm**, which seeks to promote social justice and social change.



# Practical application: LNOB Evaluation

## Translating the framework into evaluation practice



### Power and social justice

- Examine power dynamics within the evaluation process and ensure that marginalized groups have a voice in decision-making (e.g. Steering Committee of LNOB rightsholders)
- Involve LNOB rightsholders in all stages of the evaluation, from design to dissemination of findings
- Use participatory methods that create safe spaces and empower marginalized groups to share their experiences and perspectives (e.g. story telling, community dialogue sessions)







### Diversity and complexity

- Recognize multiple realities shaped by individuals' experiences, identities and contexts (e.g. social, political, cultural, economic, ethnic, gender, disability)
- Employ culturally competent approaches and mixed methods to collect data around the multiple realities of the human experiences ( e.g. peer interviews – indigenous evaluators)
- Use international lens in analysis to explore the complex interplay of LNOB factors and their implications for UNFPA's programmes



# Connect with UNFPA Independent Evaluation Office

-  [evaluation.office@unfpa.org](mailto:evaluation.office@unfpa.org)
-  [unfpa.org/evaluation](https://unfpa.org/evaluation)
-  [@unfpa\\_eval](https://twitter.com/unfpa_eval)
-  UNFPA Independent Evaluation Office

