

National evaluation capacity with a gender perspective in Latin America and the Caribbean

March 2024

Objectives

ROADMAP

1

Goals of **strengthening** national evaluation capacity with a gender perspective

2

Presentation of the **gender scanner** methodological tool

3

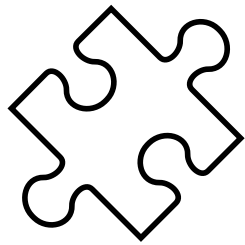
Overview of the **ongoing processes** in Latin America and the Caribbean

1

Overview

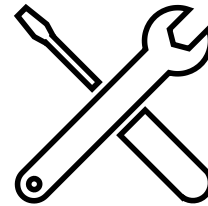
→ National evaluation systems are key to provide evidence for decision making, accountability and learning for public institutions.

→ Three areas are considered to identify **synergies between UN Women's evaluation work and wider portfolio in the Americas and Caribbean** with the objective of strengthening capacities and practices in national evaluation systems with a gender perspective.



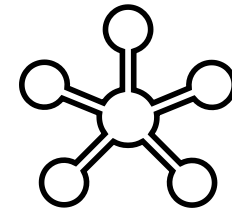
Context

Contribute for building an enabling environment for national evaluation systems with a gender perspective worldwide and in LAC



Assessment

Provide tools for data production and for the assessment of national evaluation systems in the region with gender perspective



How

Consideration of possible action points for impactful support to evaluation systems, including methodological tools and training modules

1

National evaluation capacity development

→ UN Women strategy promotes the incorporation of the gender approach in national evaluation systems, through several interrelated areas, including:

- direct support to national evaluation processes
- multi-stakeholder partnerships (EvalGender+; GEI-CLEAR; UNEG)
- technical support to countries and knowledge products

AREAS	ACTIVITIES
(i) Technical assistance	<ul style="list-style-type: none">• Provide technical assistance to strengthen the gender and human rights approach in national evaluation processes with UN Women country offices
(ii) Advocacy	<ul style="list-style-type: none">• Map government-led gender-focused evaluation processes and opportunities against national gender strategies, policies, or other frameworks
(iii) Direct support and financing	<ul style="list-style-type: none">• Identify evaluation processes led by the countries of the region in which there is demand from national governments to work in collaboration with UN Women
(iv) Training, tools and knowledge management	<ul style="list-style-type: none">• Guide for the inclusion of a gender lens in national assessments and a practical tool for the public sector• Leverage the data from the Index of National Evaluation Capacities (INCE) in conjunction with UN partners focusing on gender and human rights indicators• Facilitate access to courses/trainings on evaluation with a gender focus for national counterparts

2

Gender scanner

→ Methodological tool developed by UN Women for **assessing, measuring and integrating a gender perspective at the national level** in collaboration with newly established CLEAR-LAC and INCE (National Evaluation Capacity Index);

→ The main goal of the scanner is to **measure the effective incorporation of the gender perspective in national evaluation systems** and to evaluate the effectiveness of the gender perspective in the evaluation of public policies. The scanner provides a :

- Set of questions for the self-assessment of evaluation institutions in terms of inclusion of gender and human-rights perspective
- Useful tool to be used, replicated and adapted by a diverse range of partners, for what UN Women developed a quick guidance
- Dataset on national evaluation capacity in order to identify strengths, gaps and potential areas of learning
- Strategy on how to produce gender transformative evaluations which contribute to advance gender equality
- Evidence-based exchange between actors within and between countries.

2

Gender scanner

→ The gender scanner measures the percentage of gender perspective integration into national evaluations systems based on 5 variables:

- Institutional architecture
- Evaluation supply
- Evaluation quality
- Multistakeholder dialogue spaces
- Evaluation use

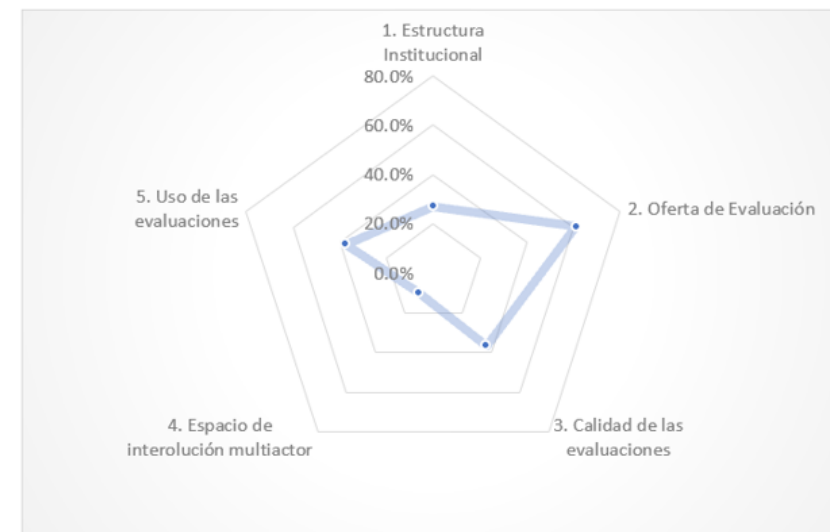
→ Systems can be classified as gender-blind, gender limited, gender sensitive or gender transformative.

Escáner Enfoque de género en los Sistemas Nacionales de Evaluación

[NOMBRE DEL PAÍS] - [Año medición]

Porcentaje de integración del enfoque de género

37.5%
Limitado al género



Subdimensiones menos desarrolladas

1.1 Entidad/es u organismos responsables de la función de evaluación

1.2 Marco normativo para el desarrollo de la práctica de evaluación

Escala de Resultados		
Categoría	Descripción	Porcentaje
Transformador	El sistema nacional de evaluación transversaliza la perspectiva de género en todas las evaluaciones de las intervenciones públicas, aportando con ello a la igualdad de género, lo que conduce a cambios sostenibles en el marco de la Agenda 2030 y la Agenda Regional de Género.	[75% - 100%]
Sensible al género	El sistema nacional de evaluación incorpora, de manera incipiente, a otros ámbitos de intervención pública la perspectiva de género, pero no de forma transversal.	[50% - 75%]
Limitado al género	El sistema nacional de evaluación no considera de manera transversal la perspectiva de género en todas las políticas, sino que se aplica en intervenciones orientadas explícitamente a abordar las desigualdades de género.	[25% - 50%]
Ciego al género	El sistema nacional de evaluación no considera la perspectiva de género para sus evaluaciones, invisibilizando los impactos diferenciados que generan las intervenciones públicas. Teniendo un resultado negativo que agrava o refuerza las desigualdades y normas de género existentes.	[0% - 25%]

3

Ecuador

Evaluation of the implementation of the gender policy of the Armed Forces of Ecuador

→ Main goal: Evaluate the current **Gender Policy of the Armed Forces (Air, Naval and Land Forces) from a gender perspective**, to make a proposal for its reformulation considering the Action Plan approved by the Constitutional Court, **including:**

- Analyze the extent to which the expected results and effects of the Armed Forces Gender Policy were achieved.
- Identify recommendations to develop a proposal to reformulate/update the Gender Policy of the Armed Forces.
- Apply the gender-based evaluation capacity scan to the institutional team involved in the evaluation, at the beginning and end of the evaluation.

→ UN Women provided in Nov 2023 a *Training workshop on public policy evaluation and application of the gender capacity scanner* for national partners;

→ **Seven national partners from Ecuador** have answered the gender scanner questionnaire with an **average result of 57,3% (gender sensitive)**;

→ The same institutions were invited to answer the questionnaire at the end of the evaluation process to provide an endline result of the scanner (ongoing)

Panama and Paraguay

- **PANAMA**: Evaluation of the **Public Policy on Equal Opportunities for Women** (2012), the Panama Action Plan (2016-2019) and the Development of the new Public Policy on Equal Opportunities for Women (2023-2033);
- Main goal is to **assess the progress made by the Panamanian State** in the framework of the implementation of these national planning documents;
- The evaluation report will provide the basis for the **organization of roundtables with the participation of civil society** partners to provide inputs for the new Panama Public Policy (2023-2033);
- **PARAGUAY**: Final evaluation of the **National Equality Plan 2018-2024**. The main objective of the evaluation is to **assess the progress made by the Government of the Republic of Paraguay** in the framework of the implementation of this plan with gender and ethnic perspectives;
- Both cases have focus on **supporting strategic learning, decision making, and institutionalization** in view of the next national policy;
- Examples of **how evaluations can be designed to be gender transformative** and to provide inputs to the insertion of a gender perspective on public policies and national plans.

Resources

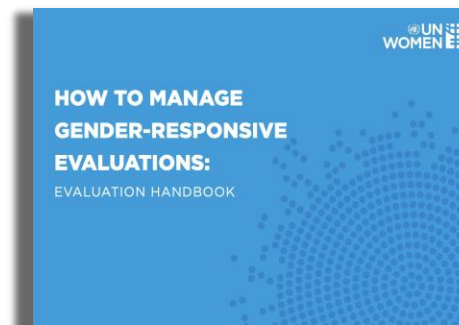
GATE

Global
Accountability and
Tracking of
Evaluation Use
system

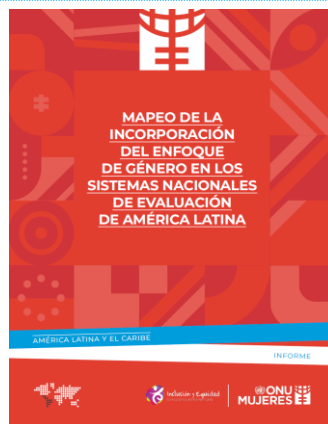
Gender responsive evaluation guidance & tools



Impact evaluation guidance note
elaborating the steps for planning and
conducting impact evaluations



**How to Manage Gender-Responsive
Evaluations Evaluation Handbook (2022)**
UN Women Evaluation Handbook



**Mapeo de la incorporación del enfoque
de género** en los sistemas nacionales de
evaluación de América



Good practices booklet in gender-
responsive evaluations in context of the
Beijing Platform for Action and SDGs

Many thanks!

GATE System

<https://gate.unwomen.org/>



Global Accountability and Tracking of Evaluation Use - GATE System

Search Evaluation Reports

[Home](#) / [Search Evaluation Reports](#)

- [Evaluations by Regions](#) +
- [Evaluations by HQs](#) +
- [Best Evaluation Reports](#)
- [Evaluation By Recommendation ^{\(New\)}](#)
- [Evaluations by Type](#) +
- [Independent Evaluation Office](#) +
- [United Nations Norms and Standards](#) +
- [Resources](#) +
- [Guidance and Manuals](#) +

Search Evaluation Reports

GATE System is an on-line based Information Management System, which facilitates UNWOMEN's effort to strategically plan and effectively use evaluations for accountability, management for results, and knowledge management.

Evaluation Commissioned by :

Regions

Regional Offices

Multi Country Offices

Country Offices

Headquarters

Location of Evaluation :

Country

UN Women SP Impact Areas:

Evaluation Search Results

[Export To Excel](#)

Select Evaluation Type Select Evaluation Unit Select Completion Year

Search

Evaluation	Evaluation Type	Unit/Country	Completion Year	Quality Rating
Mehwar Center for the Protection and Empowerment of women and their families: 2008-2012	Programme Evaluation	Palestine		Satisfactory
Final evaluation of the Safe Cities Programme Central American component (El Salvador and Guatemala) (ZONTA funded component)	Programme Evaluation	Guatemala		Satisfactory
Final Strategic Review of the Upscaling Gender Responsive Budgeting for Accelerated Action Towards Gender Equality programme	Programme Evaluation	Policy, Programme and Intergovernmental Division		Not Rated
Evaluability Assessment of the Programme on 'Strengthening women's capacity in disaster risk reduction to cope with climate change in Viet Nam'	Programme Evaluation	Vietnam		Not Rated
Final Evaluation for the Transforming Social Protection for Persons with Disabilities in Georgia	Programme Evaluation	Georgia		Good
Meta-Synthesis of UN Women Evaluations on Advocacy and Communications	Thematic Evaluation	Independent Evaluation Service (IES)	2024	Not Rated
Final Evaluation of UN Women's Programme on Women's Empowerment in Sexual, Reproductive, Maternal, Newborn, Child and Adolescent Health (SRMNCAH) Rights in Humanitarian Settings in the Horn of Africa (POWER)	Programme Evaluation	Ethiopia	2024	Not Rated
Portfolio Evaluation of Niger CPE (2018-2022)	Country-level Evaluation	Niger	2024	Not Rated
Evaluation of UNFPA / UN Women GBV 2- year Central Emergency Response Fund (CERF) Allocation	Programme Evaluation	Policy, Programme and Intergovernmental	2024	Not Rated

1

Types of evaluation with gender focus

Areas of UN Women potential support

Level	Example	Description
Public policy	Gender Violence Eradication Policy	Articulation of state actions - including their results - established on the basis of agreements and consensus between the State and society, as a response to priority problems or development opportunities
Agenda	National Agenda for Gender Equality	Coordination instrument that defines specific mechanisms for the implementation of actions established in public policy planning processes, those responsible, temporality, location and resources
Strategy	Comprehensive Strategy for the Prevention and Eradication of Gender Violence	Set of planned actions, under the responsibility of one or several actors, that allow the achievement of a common objective, in the medium or long term.
Plan	National Plan for the Eradication of Gender Violence against Children, Adolescents and Women	Planning instrument that, based on orientations and priorities defined in the technical and political field, establish short, medium or long-term objectives and goals, as well as the actions to achieve them and the articulation spaces for this purpose
Public investment program	Training Program for the Comprehensive Law to Prevent and Eradicate Violence against Women	Set of studies and projects through which public sector entities seek to coordinate actions for the benefit of a specific sector of the country, based on the achievement of a partial or sectoral objective of the plan
Public investment project	Comprehensive Care Centers for Victims of Sexual Violence and/or Sexual Exploitation in Ecuador	Set of background, studies and financial and socioeconomic evaluations that allow the decision to make or not to make an investment for the production of works, goods and/or services destined to satisfy a certain collective need
Project	Project for the Promotion of Equality in the School Environment	Set of chained and organized activities that are based on the achievement of a specific objective, which is part of the program

1

Definitions and lessons

→ Expanding, reinforcing and sustaining national capacity to demand, manage, produce and use evaluation:

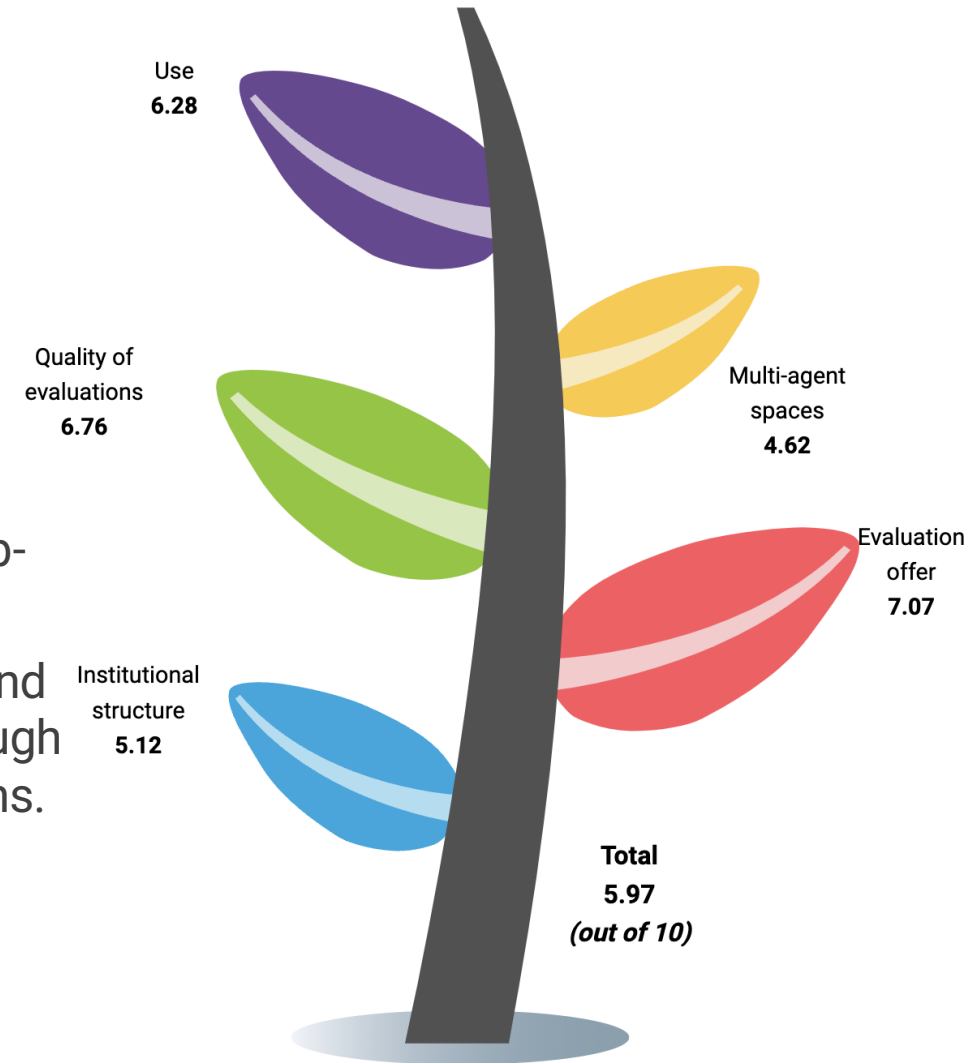
- Linked to national priorities
- Aims at strengthening governance
- Includes individual skills, institutional and enabling environment
- Supports a country-owned national system
- Primarily at national level, and can build synergies at subnational, regional and global levels
- Policies in place, but implementation still a challenge
- This may require more time to create space for learning and capacity development
- NECD is a long-term process

Source: UNEG , National Evaluation Capacity Development (2022)

2

→ **The INCE initiative generates data with focus on strengthening National Evaluation Systems:**

- INCE is a diagnostic tool for national evaluation systems based on a self-administered online survey
- INCE has been developed by WFP, with Deval and collaboratively with public organizations, academia, VOPEs
- The index contains 5 dimensions, 18 sub-dimensions and 65 questions
- The gender scanner adds both gender and human rights perspectives to INCE through the introduction of a new set of questions.



**Gender scanner
as part of the
INCE**